

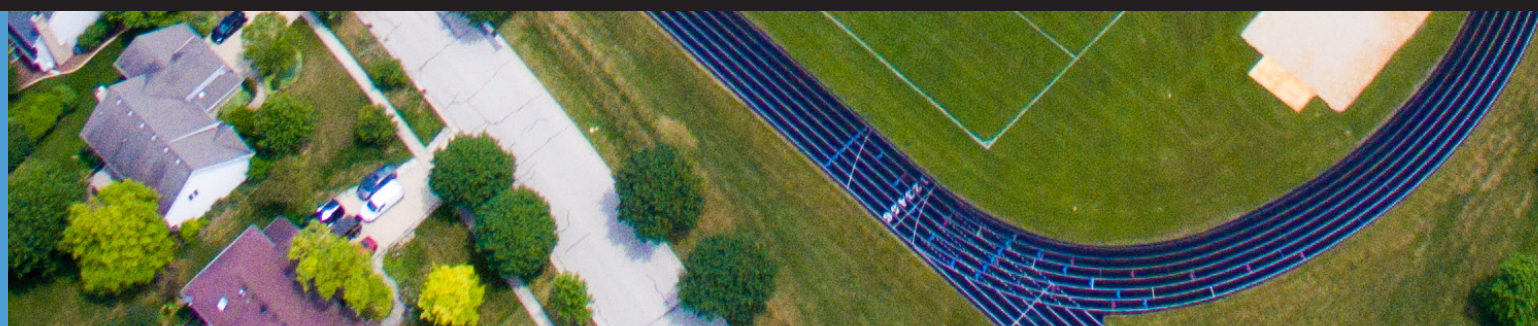


WHEATON ACADEMY



UNITE: PART II

THE 2020-2021 ROADMAP FOR A RETURN TO CAMPUS



RETURNING TO WHEATON ACADEMY

Dear Wheaton Academy Parents,

As promised, here is the next part of our plan to begin the 2020-2021 school year on August 19. We trust that this specific information will provide the clarity you need for the year ahead. We are grateful to so many of you for offering your support and encouragement as we have put this plan together. Your support is the reason we believe we can carry such a plan which prioritizes the health and well-being of our school community.

We ask that each of you read this roadmap with your students and spend some time talking about the importance of adhering to these guidelines so that every student on campus will have the best chance at remaining on campus for the entire year. We really want to keep student exposure low so that students will not need to be out of school for a quarantine period.

Although we have spent a great deal of time over the last few months putting this plan together, COVID-19 is not our theme or focus for the year. We have spent much more time (167 years!) working to accomplish the mission of Wheaton Academy—"To nurture growth in students through relationships, excellence and service to the glory of God." Our core mission has not changed, and our "Living Curriculum Teachers" are as enthused as ever to walk this challenging journey alongside our students.

Our commencement ceremony last weekend demonstrated that we can have great experiences if we all commit to following guidelines that have been established for us. God will see us through this, and we believe that He will work powerfully in the lives of students at Wheaton Academy this year as He has since 1853!

Soli Deo Gloria,



Steve Bult
Head of School

2020-2021 YEAR VERSE

For God alone, O my soul, wait in silence, for my hope is from him.
He only is my rock and my salvation, my fortress; I shall not be shaken.

PSALM 62:5-6



CONTENTS

Your Daily Roadmap.....	2
Daily Health Certification.....	3
Arrival.....	3
Passing Periods and Schedule.....	4
Classrooms.....	5
Lockers.....	5
Lunch.....	6
Dismissal.....	7
Study Hall.....	7
Winterim.....	7
Fine Arts Classes/Co-curriculars.....	8
Physical Education Classes.....	8
Athletics.....	8
Virtual Learning.....	9
Promoting Behaviors that Reduce Spread.....	10
When to Stay Home.....	10
I Have Covid-19. When Can I Return to Campus?.....	11
What Should I Do If... ..	12
What Will Happen If Someone in School Is Infected.....	13
Cloth Face Coverings.....	16
Signage and Messaging.....	16
Transportation Guidelines.....	17
Maintaining Healthy Environments.....	18
Maintaining Healthy Operations.....	20
COVID-19 Acknowledgment.....	21

YOUR CHECKLIST



DAILY HEALTH CERTIFICATION

Complete the daily health certification at home by 7:45 each morning using the Magnus App. *For more information, turn to page 3.*



ARRIVAL

If students arrive at school before 7:30 AM, they should wait outside or in one of the following spaces: Field House Link, Fine Arts Center Lobby, and Main Academic Building Atrium.

If students arrive at school after 7:30 AM, they should proceed to their classrooms. *For more information, turn to page 3.*



CLASS

We will have a block schedule four days per week and seven periods on Mondays. *For more information, turn to page 4.*



LUNCH

Students will eat lunch outside or in a classroom. Students who choose to order a lunch must order in advance via Pushcoin. *For more information, turn to page 6.*



CHAPEL AND COMMUNITY TIME

During Chapel and Community Time, students will watch a livestream broadcast with other students in classrooms or other spaces that allow for appropriate distancing. *For more information, turn to page 4.*



DISMISSAL

Students should wait to be picked up outside or in one of the following designated spaces: Field House Link, the FAC lobby, or the Atrium. *For more information, turn to page 7.*



DAILY HEALTH CERTIFICATION



Parents will be asked to certify that students are fever free and symptom free for COVID-19 each morning by 7:45 AM using the Magnus App.

Wheaton Academy partners with parents to educate students and achieve our mission. In light of the strength of this partnership, **parents will be asked to certify that students are fever free and symptom free for COVID-19 each morning by 7:45 AM using the Magnus App.**

The Magnus App will provide a series of diagnostic questions. After parents complete the questions, they will receive a notification indicating whether their student may attend school that day. This verification must be done each day, and this will be critical for us to ensure that students who come to school are symptom free. More specific instructions for using the App will be posted on families.wheatonacademy.org/health-screening.

The school day will begin at **7:55** to allow us to ensure that this process has taken place for all students.

- Students who do not have the certification completed will need to leave class so that our staff can conduct a symptom check in order for them to attend class. In such instances, appropriate cleaning and hygiene practices will be followed.
 - If the student has symptoms, he or she will immediately be isolated to the designated quarantine space to wait to be picked up by a parent or legal guardian.
 - If a staff member has symptoms, he or she will be sent home.
 - If the student or staff member is found to have a temperature of 100.0°F or higher, that individual may not return to school without presenting documentation from a healthcare professional stating that the student or staff member is cleared to return or has tested negative for COVID-19. (Providing testing is at the discretion of the healthcare professional.)
- It will not be possible for Wheaton Academy to symptom check all students every day, so in cases where students and families repeatedly do not self-certify, Wheaton Academy will take action to correct the situation so students can attend class.



ARRIVAL

Upon arrival at school, students may wait outside (weather permitting) or in the Field House Link, Fine Arts Center Lobby, and Main Academic Building Atrium. If outside and maintaining social distancing, students are not required to wear their masks. However, when students enter a building, they need to put on their mask and practice social distancing. When entering school buildings after 7:30, students should proceed to their classrooms in preparation for the first class. We will provide supervision to encourage students to social distance and to maintain proper numbers of students in various locations. Please know that spaces are limited to 50 people, so Wheaton Academy will ask students to move to another location to wait if the capacity has been exceeded.



PASSING PERIODS AND SCHEDULE

In order to reduce the number of times students are in the hallways and to allow students and teachers to move between buildings to their classroom spaces, we have modified our schedule.



We will have a block schedule four days per week and a seven-period day on Mondays. Classes start at 7:55 AM on Monday—Thursday. Our late start day will occur on Fridays with class beginning at 8:55 AM.

This schedule preserves instructional time, allows for cleaning between classes, and allows us to continue all of our community events during the week. We will still have two chapels, advisory groups, and community time each week. For these events, students will watch with other students in classrooms or other spaces that allow for appropriate distancing. One notable change—to allow for the block schedule and chapel—**our LATE START day will now occur on FRIDAYS.**

MONDAY

7 period day schedule with Community Time

7:55 – 8:43 – 1st period
8:53 – 9:36 – 2nd period
9:46 – 10:29 – 3rd period
10:34 – 10:59 – Community time
11:04 – 11:47 – 4th period
11:47 – 12:25 – Lunch
12:30 – 1:13 – 5th period
1:23 – 2:06 – 6th period
2:16 – 3:00 – 7th period

TUESDAY

7:55-9:30 – 1st period
9:40 – 10:15 – Chapel
10:25 – 12:00 – 2nd period
12:05 – 12:40 – Lunch
12:45 – 1:15 – Advisory
1:25 – 3:00 – 3rd period

WEDNESDAY/THURSDAY

7:55-9:30 – 4th period
9:40 – 11:10 – 5th period
11:10 – 11:45 – Lunch
11:50 – 1:20 – 6th – period
1:30 – 3:00 – 7th period

FRIDAY

Late start with collaboration time
8:55 – 10:30 – 1st period
10:35 – 11:05 – Chapel
11:15 – 12:45 – 2nd period
12:45 – 1:20 – Lunch
1:25 – 3:00 – 3rd period

Since passing periods are a little longer, we encourage students to observe appropriate distancing as they move through the hallways. Students may walk outside to change classes, and during this time, they will be able to take a break from their masks while adhering to appropriate distancing. This schedule will allow students and teachers to move between buildings as well as provide time to clean classrooms between periods. The block periods on Tuesday through Friday will maintain the same amount of instructional time while allowing for appropriate accommodations for students and teachers.

On Tuesday through Friday, since classes will be longer, juniors and seniors may leave campus for study hall with parent permission. Students will need to scan their ID to sign out at the front office before leaving campus and check back in when they return.



CLASSROOMS

We are blessed with five large buildings, and we will be utilizing all our spaces to allow students to be spaced out in classrooms according to best practice per the CDC and IDPH. Consequently, **desks and tables will be set up in spaces converted to classrooms in which students will be adequately spaced.**

Every classroom is equipped with a camera so that remote streaming is available, a monitor so that teachers can see remote students, a microphone so that classroom conversations can be heard by all students, and a headset so that teachers can hear and interact with remote students in real time.



LOCKERS

In order to reduce crowding in the hallways, **we will be distributing lockers only to students who “opt in.”** Students who do not use lockers will not be issued a locker, and students will not be permitted to share lockers. To opt in and obtain a locker for your student, visit **wheatonacademy.org/locker**. If your student wants a locker, please submit the request for a locker by Monday, August 17. Lockers will be assigned and spaced adequately. The exterior of the lockers will be regularly sanitized throughout the day.



LUNCH

This year, lunch will be served in a grab-and-go format. Families will use their Push Coin account to order lunch. For the grab-and-go option, lunches will be distributed to the students in individual packaging. Students may also bring a lunch from home, but they should bring everything they need because miscellaneous items will not be available for purchase on an “a la carte” line. **Please note: we will not have microwaves available for student use.**



Lunch selections must be completed each Thursday by 9:00 PM for the following week of school. Students may order lunch for a particular day(s) or for the entire week. Ordering and payment will take place via PushCoin. Specific information for setting up a PushCoin account and going through the ordering process may be found at families.wheatonacademy.org/pushcoin. Our lunch menu can be found at pushcoin.wheatonacademy.org.

If you know that you are going to be out of school or excused for more than one day and you have already placed lunch orders for coming weeks, please contact Ruth Lindstedt (rlindstedt@wheatonacademy.org) as soon as possible to make certain that you receive a proper refund.

Students will receive their lunches in the class prior to lunch each day. For lunch time, students will be able to eat outside, in classrooms, and other appropriate spaces to be explained on the first day of school. In case of inclement weather, students may need to stay in the classroom where they received their lunch. As students eat, we ask that they maintain appropriate distance since they will obviously need to remove their masks.

Specific classrooms will be set aside for students who bring peanut or tree-nut items.

Remember that Wheaton Academy is an allergy aware campus, so we do not serve peanut or tree-nut products.

Juniors and seniors will have the option of going off-campus for lunch each day. Parents will need to sign a form giving students permission to leave campus. Since Wheaton Academy will not be “monitoring” students when they leave campus, parents will need to communicate their expectations relating to traveling in cars with other students. Please note: lunch times vary each day (38 minutes on Monday; 45 minutes on Tuesday; 40 minutes on Wednesday, Thursday, and Friday).



In order to maintain appropriate health and wellbeing, **students will not be permitted to order from food delivery services while on campus during school hours.** This policy limits our visitors on campus and maintains campus security.



DISMISSAL

When school is dismissed, students will need to maintain appropriate distance, so **we encourage students to wait outside while weather permits. If waiting outside is not an option, students may wait in the Field House Link, the FAC lobby, or the Atrium.** Please know that spaces are limited to 50 people, so Wheaton Academy will ask students to move to another location to wait if the capacity has been exceeded.

Because we will be using all our spaces on campus to allow for appropriate distancing, the library will not be available before or after school for students since we will be using the library as classroom space.

As always, when students need help at lunch or after school, they will be able to schedule time for help with their teacher.



STUDY HALL

Students will use their ID card to scan into study hall. Our larger study halls will take place in the field house to allow for appropriate distancing.

On Tuesday through Friday, since classes will be longer, juniors and seniors may leave campus for study hall with parent permission. Students will need to scan their ID to sign out at the front office before leaving campus and check back in when they return.



WINTERIM

This year, Wheaton Academy will continue to have Winterim, which provides students incredible opportunities to learn in classes, on internships, and through travel. We have various plans for this year's Winterim, hoping to offer classes, internships, and limited domestic travel opportunities. If travel is not possible, students and parents may choose either an on-campus class option or an internship. More specific information will be released throughout the fall.



FINE ARTS CLASSES/ CO-CURRICULARS

Our co-curricular offerings will continue and students will hear about how to get involved in these offerings during Community Time.

Wheaton Academy's excellent faculty has been actively finding ways to continue to allow our students to experience the opportunity to perform and participate in the arts. Each of our faculty has been in consultation with national and local organizations to ensure health and well-being for our students. Specific information for each of these classes will be provided to parents and students who are enrolled. We are committed to finding creative ways to continue to hone the talents and gifts of our students even as some elements of our varied offerings will look different this year. Wheaton Academy is confident that students will grow and learn to develop their gifts throughout this year in our Fine Arts programs.



PHYSICAL EDUCATION CLASSES

PE classes will be conducted with appropriate cleaning and distancing practiced each day. Class sizes have been set to allow use of the weight room while maintaining standards for health and well-being. Students will be able to use the locker room to change for PE with appropriate distancing. Signage will be in place to help students follow the guidelines.

Students should plan to bring their clothes for PE each day and take them home for appropriate cleaning. For PE classes, students may request a locker from the teacher on the first day of class. Lockers may not be shared. Each PE class will provide students with the guidelines and expectations for their specific class.



ATHLETICS

Wheaton Academy coaches and athletic administration are working hard to adjust practice plans and schedules according to the new IHSA guidelines. Coaches are offering athletic experiences within the current guidelines while also remaining connected and committed to the development of their players.

For the IHSA updates, visit [**IHSA.org/News-Media/Announcements**](https://www.ihsa.org/News-Media/Announcements).



WHAT IF MY STUDENT IS LEARNING VIRTUALLY?

Wheaton Academy has been preparing to provide all teachers with the ability to accommodate students both in the classroom and from a distance. Students joining us remotely will be with their classes synchronously.

Each teacher will communicate to students the process of “joining” each day’s class. Students are expected to be in attendance and on time for each class every day during virtual learning. If they encounter an issue, they need to communicate with teachers and Student Services to let them know the reason they were unable to attend.

Wheaton Academy uses a learning management system called OnCampus that allows students to receive assignments, turn in work, and access resources for all classes. Additionally, teachers and students can communicate via OnCampus, and students and families can access grades and graded work through OnCampus.

In order to enhance every student’s learning experience, Wheaton Academy has invested in additional classroom technology including webcams, monitors, and microphones. Students who are not on campus will have the opportunity to participate in chapel, advisory, and other gatherings as well via either Livestream or Zoom.

Parents who wish to opt into virtual learning should contact Brad Thornton at bthornton@wheatonacademy.org.

Families who choose virtual learning will have the opportunity to choose to return to school based on these sessions:

- **Virtual Learning Session 1: August 19—October 2**
(We will send a similar survey and ask you to make a decision about Session 2 by September 25.)
- **Virtual Learning Session 2: October 5—November 6**
(We will send a similar survey and ask you to make a decision about Session 3 by October 30.)
- **Virtual Learning Session 3: November 9—December 11**

PROMOTING BEHAVIORS THAT REDUCE SPREAD

All employees will be trained and students educated on the following health and safety protocols.



WHEN TO STAY HOME

The “stay home” policy is based on CDC materials that include the following recommendations:

- We must all realize that each individual is significant in order to maintain a healthy Wheaton Academy community. **Following appropriate guidelines will be critical to allow us to remain together.**
- Any individual showing signs of illness, such as cough, shortness of breath, difficulty breathing, chills, fatigue, muscle and body aches, headache, sore throat, new loss of taste or smell, congestion or runny nose, nausea, vomiting, or diarrhea, must stay home. **All students and staff must complete the self-certification each day through the Magnus App in order to be at Wheaton Academy.**
- **Students or staff with a temperature of 100.0°F or higher must stay home until cleared by a healthcare provider and be without a fever for at least 24 hours (without the use of fever-reducing medication such as Tylenol or Ibuprofen). The student or staff must provide documentation from the provider before returning to school.**
- **Staff and students must stay home if they have tested positive for or are showing COVID-19 symptoms.**
- **Staff and families must report specific symptoms, COVID-19 diagnoses, and COVID-19 exposures when reporting absences.** Information will be documented and shared with the school nurse or other appropriate personnel.

Wheaton Academy will clearly communicate to employees and families that employees and students may not come to school and that they must notify the school nurse if the employee or student becomes sick with COVID-19 symptoms, tests positive for COVID-19, or has been exposed to someone with COVID-19 symptoms or with a confirmed or suspected case.

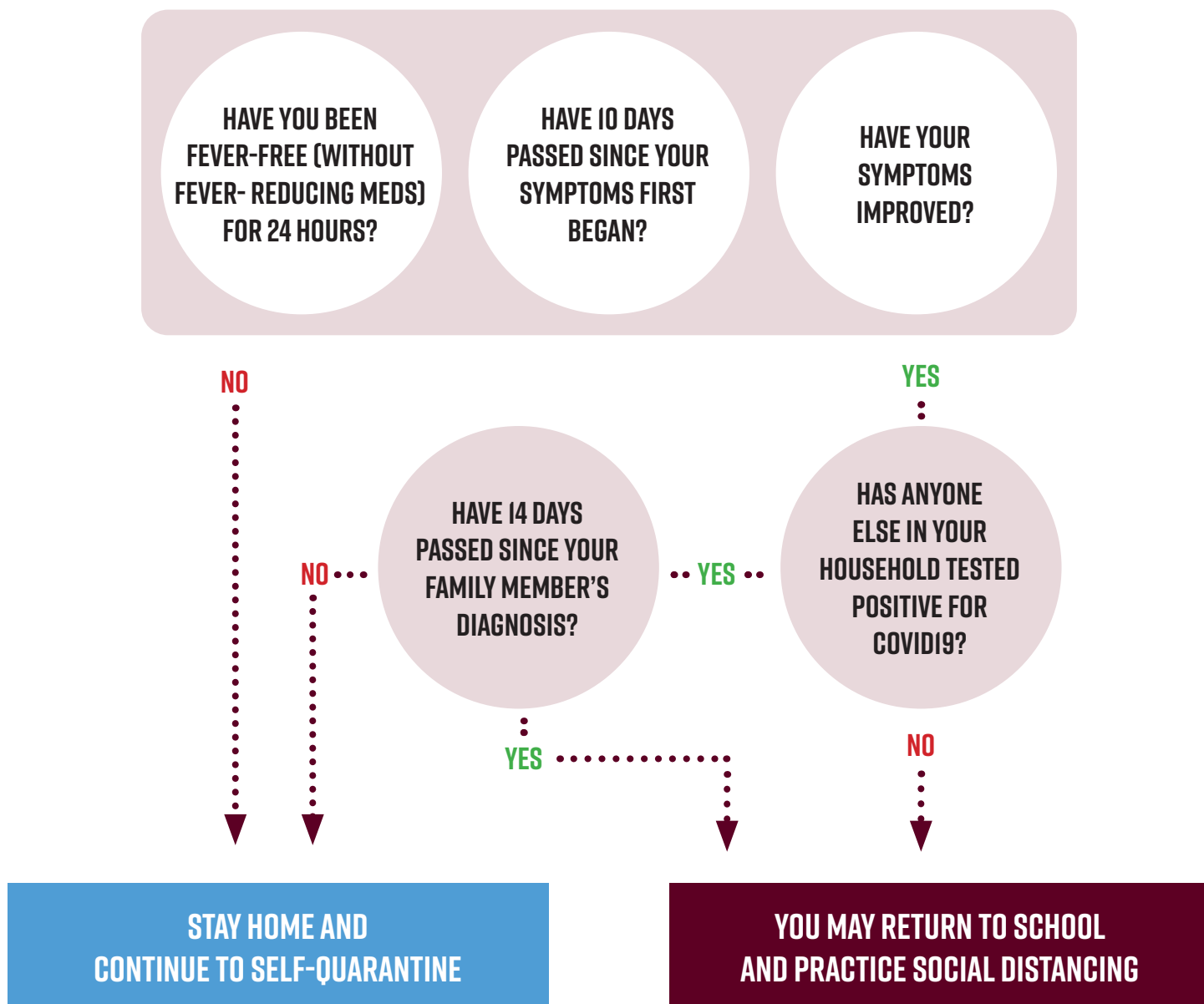
Following this procedure, we will notify local health officials, staff, and families immediately of any case of COVID-19 while maintaining the requisite confidentiality. Administrators will share IDPH guidelines for home quarantine to close contacts of a person diagnosed with COVID-19.

Staff members or students who test positive for COVID-19 (or are suspected of having COVID-19) will not be permitted to return until they have met the CDC’s criteria to discontinue home isolation. All three criteria must be met: 24 hours without a fever and without the use of fever-reducing medication, improved symptoms, and at least 10 days have passed since symptoms appeared. Depending on the healthcare provider’s advice and availability of testing, the individual

might choose testing to see if he or she still has COVID-19. Wheaton Academy will provide this guidance from the CDC regarding when staff or students may return to school.

Before returning to class, staff members or students returning to school from COVID-19 related illness must provide documentation from a healthcare provider that it is safe to return to school and check in with the school nurse or building administrator following quarantine for a health screen.

I HAVE COVID-19. WHEN CAN I RETURN TO CAMPUS?



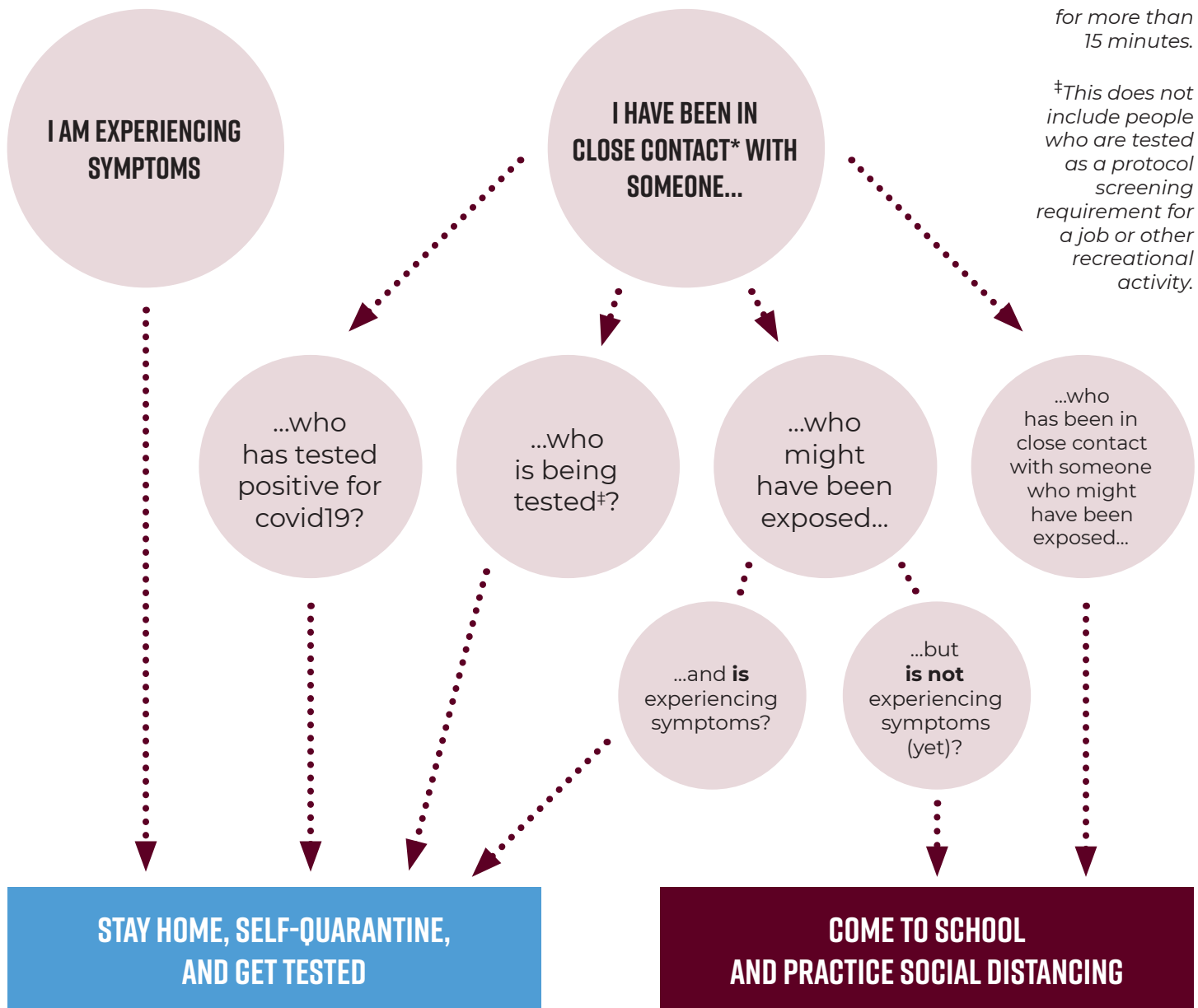
- “Join” classes virtually and complete your learning online.

- You must provide documentation from a healthcare provider stating that it is safe to return to school.
- You must check in with the school nurse or building administrator for a health screening.

WHAT SHOULD I DO IF...

**Close contact is defined by the CDC as being within six feet for more than 15 minutes.*

‡This does not include people who are tested as a protocol screening requirement for a job or other recreational activity.



- Separate yourself from other people in your home.
- Avoid sharing personal household items.
- Practice good hygiene.
- Stay home, except to get medical care.
- If symptoms are severe, contact your health care provider by phone or virtual appointment.

Practice good hygiene and take everyday precautions:

- Wash your hands regularly.
- Don't touch your face, eyes, or mouth.
- Avoid sick people.

WHAT WILL HAPPEN IF SOMEONE IN THE SCHOOL IS INFECTED WITH COVID-19?

The wearing of face coverings and adherence to social distancing guidelines lower risk of exposure to the virus. Should a student become infected with COVID-19, Wheaton Academy will follow the IDPH's guidelines for notification of low-risk or high-risk exposure. Low-risk exposure is defined by the IDPH as being in contact with a person with COVID-19 for a prolonged period of time but not meeting the definition of close contact.

Close contact is generally defined by the IDPH as the following:

- Living in the same household as a person with COVID-19
- Caring for a person with COVID-19
- Being within 6 feet of a person with COVID-19 for more than a 15 minutes
- Being in direct contact with secretions from a person with COVID-19 (e.g. being coughed on, kissing, sharing utensil, etc.)
- Being in close contact (as described above) in the 48 hours before a person with COVID-19 developed symptoms



IDPH states that for a low-exposure event, currently no movement restrictions are recommended beyond social distancing (more than 6 feet and wear a face-cover). Students and employees are asked to self-monitor for COVID-19 symptoms, as they are every day, but can continue to come to school.

MANAGING STUDENT ILLNESS

As illustrated by the two diagrams on pages 11-12, Wheaton Academy has the following expectations for managing student illness, positive test results, and the return to campus.

A. STUDENTS WITH COVID-19 SYMPTOMS

I. SYMPTOMS AT HOME

Students who exhibit symptoms consistent with COVID-19 may not come to school and should stay home and contact their medical provider. The student's symptoms must be reported to the school nurse or office staff.

Symptoms may include but are not limited to

- Temperature above 100 degrees Fahrenheit
- Body aches and/or chills
- Persistent coughing
- Shortness of breath or difficulty breathing

- New loss of taste or smell
- Sore throat
- Congestion or runny nose
- Nausea or vomiting
- Diarrhea

If the student is found to have a temperature of 100.0°F or higher, that individual may not return to school without presenting documentation from a healthcare professional that states the student or staff member is cleared to return or has tested negative for COVID-19. (Providing testing is at the discretion of the healthcare professional.)

2. SYMPTOMS AT SCHOOL

- If a student becomes ill during the school day, the student will be sent to the school office after obtaining permission from the student's classroom teacher.
- The school nurse or designee will then make arrangements for proper care or contact the student's parent, should the student need to go home.
- If necessary, a student may spend up to one period in the sick room or may be quarantined in the quarantine room depending on the symptoms.
- Students will be sent home if exhibiting the following symptoms:
 - Temperature above 100 degrees Fahrenheit [The individual may not return to school without presenting documentation from a healthcare professional that states the student or staff member is cleared to return or has tested negative for COVID-19.] (Providing testing is at the discretion of the healthcare professional.)
 - Body aches and/or chills
 - Persistent coughing
 - Complaints of sore throat or difficulty breathing
 - Vomiting or diarrhea

If necessary, an ambulance will be called to transport the student to the hospital.

B. STUDENTS WITH POSITIVE COVID-19 TEST RESULTS

- Students must not come to school.
- Parents must report a positive COVID-19 result to the school nurse as soon as possible. In order to support the health of other students and staff, it is essential that parents report test results immediately.
- Information regarding the student's positive status will be kept as confidential as possible. If the student had close contact with other classmates or staff members in the days prior to the positive test result, it may be necessary to share the student's identity in order to allow for contact tracing and to reduce the spread of COVID-19. Close contact means the individual, for more than 15 minutes, was within 6 feet of the individual who tested positive for COVID-19 or is suspected of having COVID-19.

C. IMMEDIATE FAMILY WITH SYMPTOMS OR POSITIVE COVID-19 TEST RESULTS

- Families are asked to update the school nurse if a member of the student's immediate family, residing in the household, has tested positive for COVID-19.
- Students may not come to school and will be asked to follow CDC guidelines and self-quarantine for 14 days following the family member's diagnosis.
- Administrators will share IDPH guidelines for home quarantine to close contacts of a person diagnosed with COVID-19.

RETURN-TO-SCHOOL GUIDELINES

- Students who have tested positive for COVID-19 may not return to school until they have met the CDC's criteria to discontinue home isolation. All three criteria must be met:
 - 24 hours without fever, without fever reducing medication
 - Symptoms have improved
 - At least 10 days since symptoms appeared
- Depending on the healthcare provider's advice and availability of testing, the individual may seek a follow-up test to see if he/she still has COVID-19. At this time, Wheaton Academy does not require a negative test to return to school.
- Students returning to school from COVID-19-related illness must provide documentation from a healthcare provider stating that it is safe to return to school.
- Students must check in with the school nurse or building administrator following quarantine for a health screen before being allowed to return to class.

QUESTIONS?

For more COVID-19 guidelines, please visit

- cdc.gov/coronavirus
- dph.illinois.gov/covid19

If you have questions about these guidelines or if you need help navigating a specific situation, please contact our school nurse, **Jennifer Sezonov** at jsezonov@wheatonacademy.org or **630-562-7504**.



CLOTH FACE COVERINGS

State officials are requiring all individuals in school buildings to wear face coverings at all times, even when social distancing is maintained, unless they are younger than 2 years of age; have trouble breathing; or are unconscious, incapacitated, or otherwise unable to remove the cover without assistance. Face coverings also are required on the school bus. Face coverings will not be required outside if social distance is maintained but will be required when walking into and out of the school building. An exception is available for those individuals who cannot medically tolerate a mask.

Training will be provided to staff, students, and families regarding the way to safely wear and take off a face covering, including avoiding touching the face covering and one's eyes, nose, and mouth and washing hands before placing and after removing the face covering. Information from the CDC will be shared with families and staff regarding the way to wash a cloth face covering, including the recommendation to wash and thoroughly dry it after each use. Explanation will be communicated to families and staff that when using a cloth or disposable face covering, it should be replaced if moist, dirty, or torn, and disposable face coverings should not be worn for more than one day.

The receptionist will have a supply of disposable face coverings for students or staff who did not bring one to school and for approved visitors to campus.



State officials are requiring all individuals in school buildings to wear face coverings at all times, even when social distancing is maintained.



SIGNAGE AND MESSAGING

We will

- Post signs in highly visible locations (e.g., school entrances, restrooms) that promote everyday protective measures and describe ways to stop the spread of germs (such as properly washing hands and properly wearing a cloth face covering).
- Include messages about behaviors that prevent the spread of COVID-19 when communicating with staff and families on the school's website, in weekly e-newsletters, in emails, and on the school's social media accounts.
- Utilize CDC print and digital resources on CDC's communications resources main page.



TRANSPORTATION GUIDELINES

All individuals on a bus must wear a face covering. The bus driver must monitor adherence to this.

Social distancing must be maintained to the greatest extent possible. The bus driver must monitor adherence to this.

Drivers and monitors must wear approved and appropriate PPE and perform regular hand hygiene. Considerations should be given to the provision of appropriate supplies to prevent the spread of COVID-19 (e.g., hand sanitizers, gloves, face coverings, tissues, and trash receptacles).

Drivers and monitors must undergo symptom and temperature checks or self-certify and verify that they are free of symptoms before the start of each workday. Drivers and monitors who have a temperature greater than 100.4 degrees Fahrenheit/38 degrees Celsius or symptoms of COVID-19 may not work. Drivers and monitors who become ill during their route must contact their supervisor immediately.

Seating arrangements with respect to social distancing can be adjusted for students who live in a household with other students.

Sanitization must be completed daily or between use on all vehicles used for student transportation. Individuals must disinfect vehicles using only products that meet the EPA criteria and manufacturers' guidelines.

All physical changes to school transportation vehicles must meet Illinois Department of Transportation (IDOT) and Secretary of State rules and regulations. All required IDOT inspections should occur.

MAINTAINING HEALTHY ENVIRONMENTS

An effective strategy to prevent the spread of COVID-19 is to ensure our cleaning protocols follow guidelines established by the CDC.



CLEANING AND DISINFECTION

Wheaton Academy has contracted with ServiceMaster to create a plan for cleaning and disinfecting all buildings on campus. Cleaning practices will include

- Day porters throughout the day to frequently clean high traffic surfaces and restrooms
- Disinfecting wipes and hand sanitizer present in all classrooms
- Intensified nightly “deep” cleanings with approved disinfectants
- Teacher training and resources to enable teachers to clean their own classrooms
- Adequate ventilation when using cleaning products



SHARED OBJECTS

The following rules will be addressed with faculty, staff, students, and families.

- No sharing of items that are difficult to clean or disinfect
- No sharing of lockers
- Ensure adequate supplies to minimize sharing of high touch materials to the extent possible (e.g., assigning each student their own art supplies, equipment), or limit use of supplies and equipment by one group of students at a time, and clean and disinfect between use.



VENTILATION

Teachers and staff will be encouraged to increase the circulation of outdoor air as much as possible by opening windows and doors, taking into consideration asthma triggers.



WATER SYSTEMS

Only the water bottle filling station will be activated on the water fountains. Staff and students will be encouraged to bring their own water to minimize use.

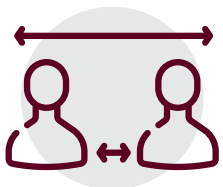
MAINTAINING HEALTHY OPERATIONS



PROTECTIONS FOR STAFF AND STUDENTS AT HIGHER RISK FOR SEVERE ILLNESS FROM COVID-19

Wheaton Academy will

- Offer options for staff at higher risk for severe illness (including older adults and people of all ages with certain underlying medical conditions) that limit their exposure risk (e.g., telework, modified job responsibilities)
- Offer options for students at higher risk of severe illness that limit their exposure risk (e.g., virtual learning opportunities)
- Consistent with applicable law, put in place policies to protect the privacy of people at higher risk for severe illness regarding underlying medical conditions



GATHERINGS, VISITORS, AND FIELD TRIPS

Visitors and volunteers will be limited, and physical distancing measures must be maintained. A log of visitors, indicating locations visited, will be kept in the event contact tracking is needed. We will screen and temperature check all campus visitors.



BACK-UP STAFFING PLAN

The school nurse and office staff will monitor the absenteeism of students and employees. WA will increase the substitute teaching and office staff call lists and training to minimize disruptions due to absent teachers or staff.

COVID-19 ACKNOWLEDGMENT

Next week all families will be asked to read and sign this letter of acknowledgment. This letter will be sent out via Magnus.

PARENT AND STUDENT ACKNOWLEDGEMENT HEALTH COMMITMENT and WAIVER

Wheaton Academy has made plans to resume our on-campus instructional program and co-curricular activities for the 2020-2021 academic year. We place a high priority on the health and safety of all students in our school. Our school will resume with some changes in place in the face of COVID-19 to assure, to the extent possible, that students, faculty, and staff may safely attend.

Upon your review of these efforts, we request your acknowledgment that your enrolled Student (and the individual Student, if 18 years old or older) attends Wheaton Academy voluntarily and with the understanding that, notwithstanding our best efforts, the school cannot can guarantee that it will remain free of COVID-19 or any virus or that you or your Student will not contract COVID-19 or any other infection at the School. We also ask that you acknowledge that subsequent events, such as a secondary resurgence of cases or a renewed shelter-in-place order, may require the School to suspend its on-campus instructional program and co-curricular activities. In that case, the School will continue its instructional program remotely.

Wheaton Academy works closely with physician advisors and reviews the local, state and national health department guidelines and stays informed with all applicable legal mandates, including those regarding public health. Guidance, advice, and various mandates have proven to change from time to time, so our organization's response is also fluid and changing. Wheaton Academy has chosen to be an Illinois State Board of Education recognized school. Wheaton Academy will make reasonable efforts to follow appropriate guidelines for schools and other applicable authorities, but we retain the right to make decisions we believe are in the best interest of our community.

Based upon the best information available to us at this time, Wheaton Academy intends to implement the following prevention and mitigation efforts, and we require that Parents, Students, Faculty, and Staff make the following commitments.



WE ARE READY

We are ready for a great year regardless of the circumstances. We know that a pandemic is nothing our God cannot overcome. We hold firmly to God's promises in Scripture:

"Now to him who is able to do immeasurably more than all we ask or imagine, according to his power that is at work within us, to him be glory in the church and in Christ Jesus throughout all generations, for ever and ever! Amen."

Ephesians 3:20-21

QUESTIONS?

If you have questions, we are here to help you. Please reach out!

Steve Bult, Head of School

sbult@wheatonacademy.org

Kori Hockett, Principal

khockett@wheatonacademy.org

Steve Karlson, COO

skarlson@wheatonacademy.org

Brad Thornton, Vice Principal

bthornton@wheatonacademy.org

Brad Byrne, Athletics Director

bbyrne@wheatonacademy.org

Matt Hockett, Fine Arts Department Head

mhockett@wheatonacademy.org

Jennifer Sezonov, Nurse

jsezonov@wheatonacademy.org

For updates and announcements, visit families.wheatonacademy.org/covid19.



WHEATON ACADEMY